

DISTRIBUTE TO: District through Territory Leaders, Zone and Territory Offices
FROM: SGI-USA Development Office
SUBJECT: (A) 2021 May Commemorative Contribution 1-Page Info Sheet (English)

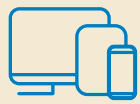


MAY COMMEMORATIVE CONTRIBUTION

SATURDAY, APRIL 24 – SUNDAY, JUNE 6

WAYS TO CONTRIBUTE

In consideration of the health and well-being of SGI-USA members amid the continued spread of coronavirus (COVID-19), contributions can be made in the following ways:



ONLINE VIA MEMBERSHIP PORTAL
portal.sgi-usa.org/portal/contribution

- Click “Make a May Contribution”
- Log in to your account or register
- To register: Go to portal.sgi-usa.org/portal/login Enter your Email or Member ID and click on “I have not created an online account yet”
- The SGI-USA Portal will be open for May Contribution from April 24–June 6



CALL SGI-USA MEMBER SERVICES

Call Member Services at 855-744-2030
Mon-Fri 7am-5pm PT

[To contribute by Credit or Debit Card]



SCAN QR CODE WITH YOUR SMARTPHONE

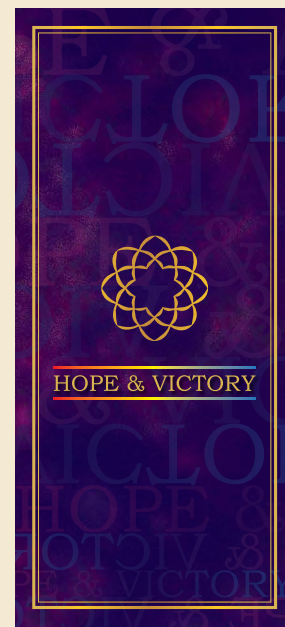


“A person filled with gratitude is also filled with joy. And a joyous spirit is the driving force for new endeavors, development, victory and happiness.”

(The New Human Revolution, vol. 26, p. 335)

APPRECIATION GIFT

Each member who participates in May Contribution will receive a commemorative note pad gift by US mail at the end of June.



U.S. MAIL

- Each subscriber will receive pre-paid contribution envelopes with their April 9 and May 16 issues of the *World Tribune*.
- If sending a personal envelope, mail to:

ATTN: May Campaign
SGI-USA Member Services
606 Wilshire Blvd.
Santa Monica, CA 90401

****Cash will not be accepted****